

# State of Wyoming Corner Record

(In compliance with the *CORNER PERPETUATION AND FILING ACT*, Wyoming Statutes, 1997 Section 33-29-140 et. se., and the Rules and Regulations of the Board of Professional Engineers and Professional Land Surveyors)

Reverse side of this form may be used if more space is needed.

Record of original survey and citation of source of historical information (if corner is lost or obliterated). Description of corner monumentation evidence found and/or monument and accessories established to perpetuate the location of this corner. Sketch of relative location of monument, accessories, and reference points with course and distance to adjacent corner(s) (if determined in this survey). Method and rationale for re-establishment of lost or obliterated corner.

**RECORD:** G.L.O. survey by J. Wesley Hammond in 1873 "80.00 ch. Sandstone 15x15x3, set 12 inches deep, marked with 2 notches on West and 4 notches on East"

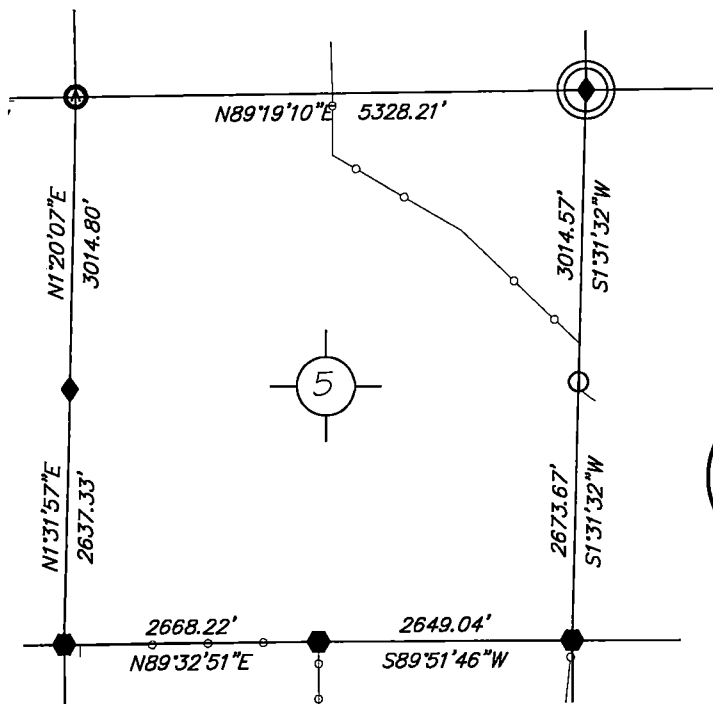
**FOUND:** 16x12x3 Sandstone laying on side with scattered rock mound.

**Re-monumentation:** Re-Set stone and re-construct 2x2 rock mound to west. Set 2.0 inch aluminum cap on 5/8x24 inch rebar, marked "Corner Accessory" north edge of stone.

NAD83, position:

Point #	North	East	Elev.
1860052	389629.29	950189.09	4904.28

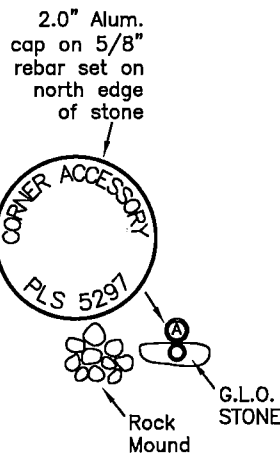
**NOTE:**  
BEARINGS AND DISTANCES SHOWN HEREON ARE BASED UPON GRID USING NAD83 WYOMING EAST ZONE AND TRIMBLE R8 GPS OBSERVATION



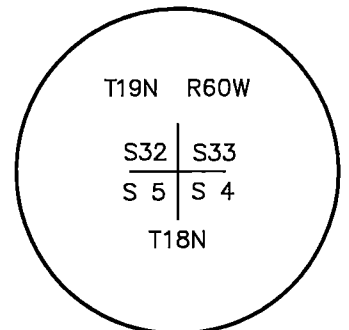
### Monument Location

corner referenced this record =

#### SKETCH



#### LARAMIE COUNTY

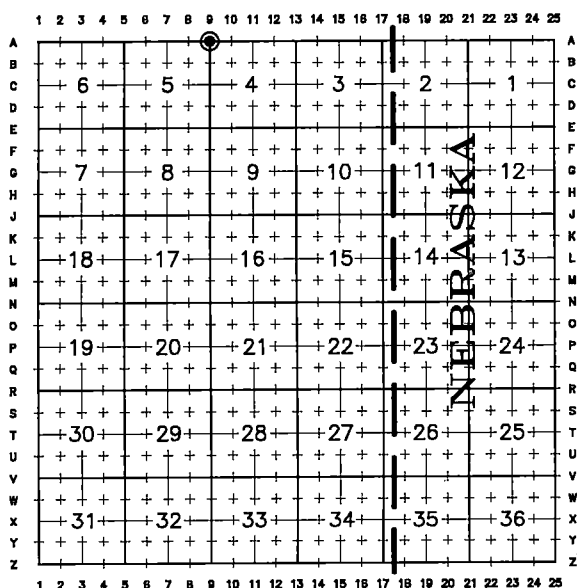


**No Marking  
Monument Reference**

Date of Field Work: May 23 & 30, 2019

Office Reference: DRG-21866, Pt.1860052

### Cross Index Plat



Firm/Agency, Address

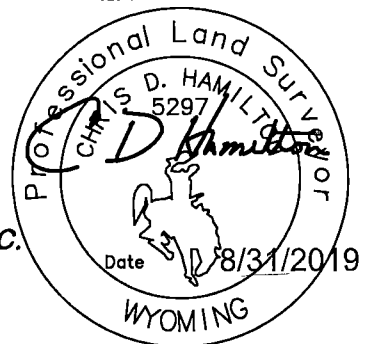
this corner record provided by:

**HAMILTON  
LAND  
SURVEYING**

UNDER CONTRACT TO:

**DRG** RIFFIN & ASSOCIATES, INC.  
1414 ELK ST., SUITE 202  
ROCK SPRINGS, WY 82901  
(307) 362-5028

This corner record was prepared by me or under my direction and supervision.  
SEAL & SIGNATURE



RECP #: 761788  
RECORDED 9/18/2019 AT 1:44 PM BK# 2638 PG# 1470  
Debra K Lee, CLERK OF LARAMIE COUNTY, WY PAGE 1 OF 1

Debra Lee  
County Clerk Deputy

STATE of WYOMING, Office of Clerk & Recorder, County of Laramie  
this block provided for county filing documentation

Corner Name: Northeast, Section: 5, T 18N, R 60W, 6th P.M., Cross-Index No.: A-09

SBRPEPLS/PLSW: March 1994; PLSW January 1998

County: LARAMIE, Wyoming